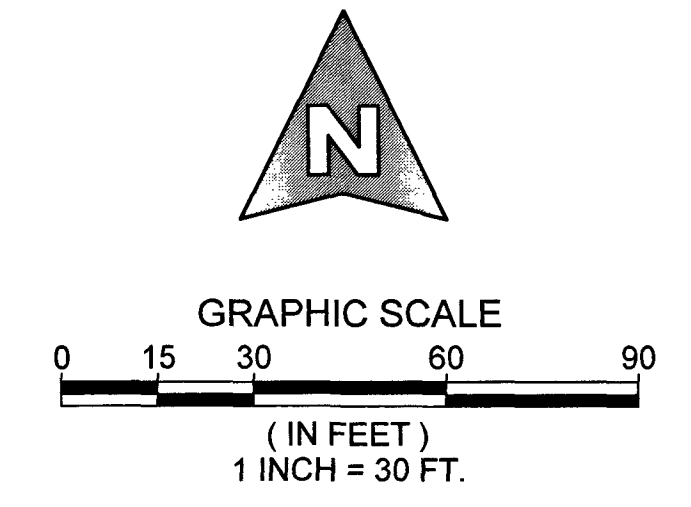
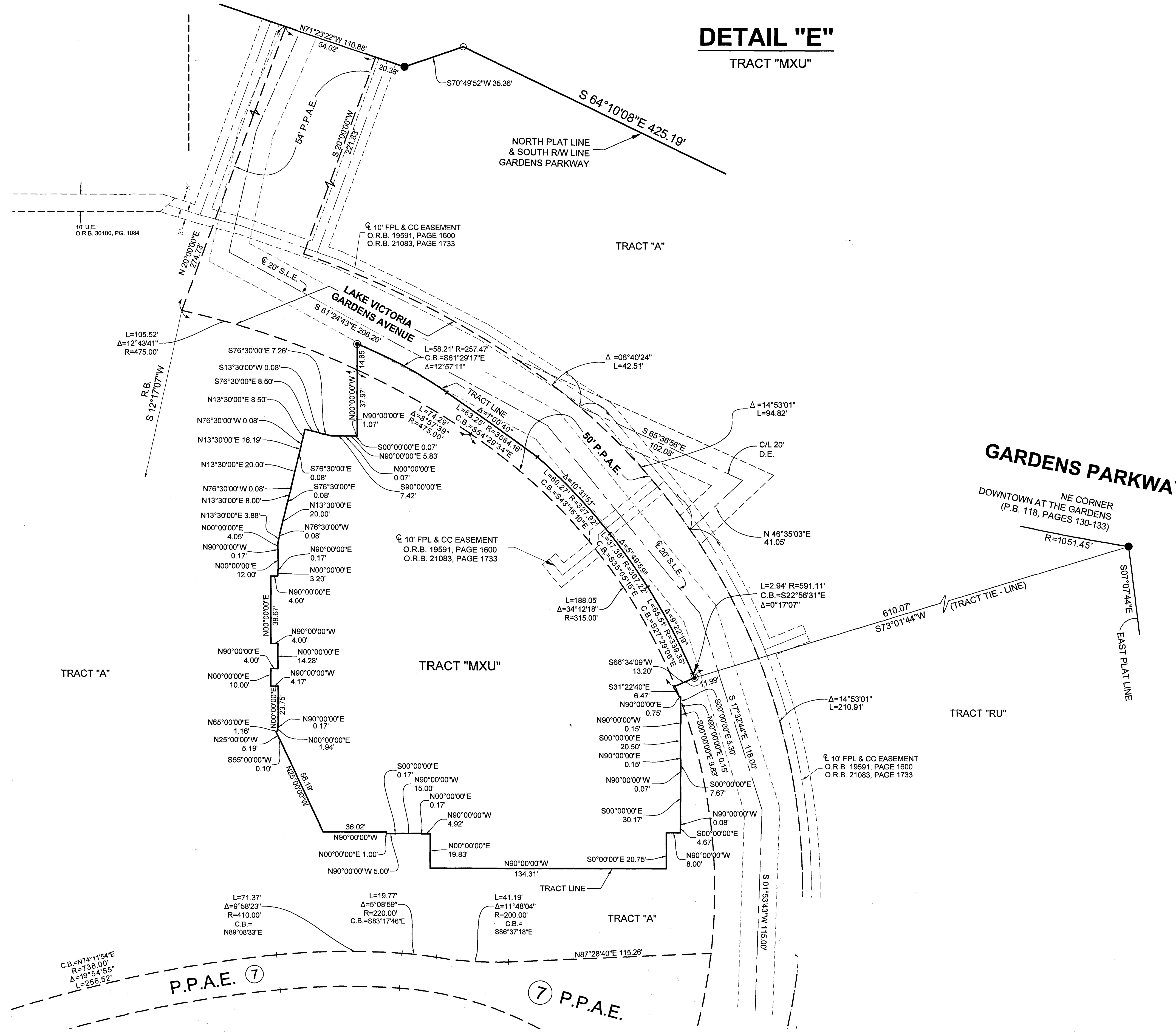


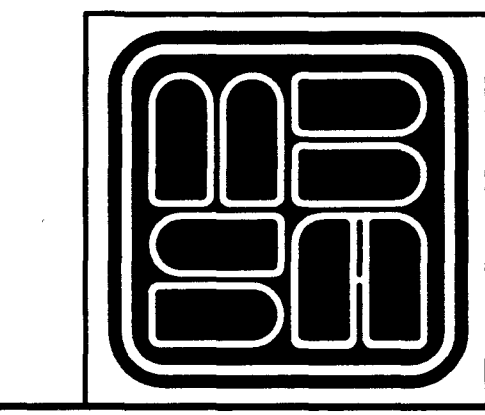
# DOWNTOWN PALM BEACH GARDENS

LYING IN SECTION 6, TOWNSHIP 42 SOUTH, RANGE 43 EAST, CITY OF PALM BEACH GARDENS, PALM BEACH COUNTY, FLORIDA, BEING A REPLAT OF ALL OF DOWNTOWN AT THE GARDENS, AS RECORDED IN PLAT BOOK 118, PAGES 130 THROUGH 133, PUBLIC RECORDS OF PALM BEACH COUNTY, FLORIDA.

## DETAIL "E" TRACT "MXU"



ABBREVIATIONS		ABBREVIATIONS	
P.O.B. = POINT OF BEGINNING	P.O.C. = POINT OF COMMENCEMENT	R.P.B. = ROAD PLAT BOOK	P.E. = PEDESTRIAN EASEMENT
P.C.P. = PERMANENT CONTROL POINT	P.R.M. = PERMANENT REFERENCE MONUMENT	CC = COMCAST CABLE	ID = IDENTIFICATION
C.M. = CONCRETE MONUMENT	O.R.B. = OFFICIAL RECORD BOOK	FB = FOUND	EB = ENGINEERING BUSINESS
D.B. = DEED BOOK	P.B. = PLAT BOOK	LB = LICENSE BUSINESS	P.R.C. = POINT OF REVERSE CURVATURE
P.B.C. = PALM BEACH COUNTY	F.D.O.T. = FLORIDA DEPARTMENT OF TRANSPORTATION	P.S.M. = PROFESSIONAL SURVEYOR AND MAPPER	PC = POINT OF CURVATURE
S.U.A. = SEACOAST UTILITY AUTHORITY	R/W = RIGHT OF WAY	B.E. = BUFFER EASEMENT	A.E. = ACCESS EASEMENT
CL = CENTERLINE	U.E. = UTILITY EASEMENT	<b>SYMBOLS</b>	
D.E. = DRAINAGE EASEMENT	L.A.E. = LIMITED ACCESS EASEMENT	Δ = CURVE CENTRAL ANGLE	⊙ = FOUND P.R.M. (NAIL AND BRASS DISK, STAMPED PRM LB 2438)
L.B.E. = LANDSCAPE BUFFER EASEMENT	L.M.E. = LAKE MAINTENANCE EASEMENT	● = FOUND P.R.M. (1/2" IRON ROD WITH ALUMINUM DISK, STAMPED SCHORAH AND ASSOCIATES PRM LB 2438)	⊕ = FOUND P.R.M. (AS SHOWN)
R = RADIUS	L = ARC LENGTH	○ = FOUND P.R.M. (NAIL AND DISK OR AS SHOWN)	⊗ = SECTION CORNER
C.B. = CHORD BEARING	C.L. = CHORD LENGTH	⊙ = FOUND P.R.M. (NAIL AND DISK OR AS SHOWN)	⊕ = 1/4 SECTION CORNER
I.R. = IRON ROD	L.S.E. = LIFT STATION EASEMENT	⊕ = FOUND P.R.M. (NAIL AND DISK OR AS SHOWN)	L.S.E. = LIFT STATION EASEMENT
R.B. = RADIAL BEARING	OA = OVERALL	⊕ = FOUND P.R.M. (NAIL AND DISK OR AS SHOWN)	
W.L.E. = WATER LINE EASEMENT	S.L.E. = SEWER LINE EASEMENT		
W.M.E. = WATER MANAGEMENT EASEMENT	P.P.A.E. = PERPETUAL PUBLIC ACCESS EASEMENT		
F.P.L. = FLORIDA POWER AND LIGHT COMPANY	S.U.A.E. = SEACOAST UTILITY AUTHORITY EASEMENT		



**MICHAEL B. SCHORAH & ASSOCIATES, INC.**  
1850 FOREST HILL BLVD., SUITE 206  
WEST PALM BEACH, FLORIDA 33406  
TEL. (561) 968-0080 FAX. (561) 642-9726 LB# 2438

**DOWNTOWN PALM BEACH GARDENS**